

PathVysion (CE) for Breast and Gastric Cancer

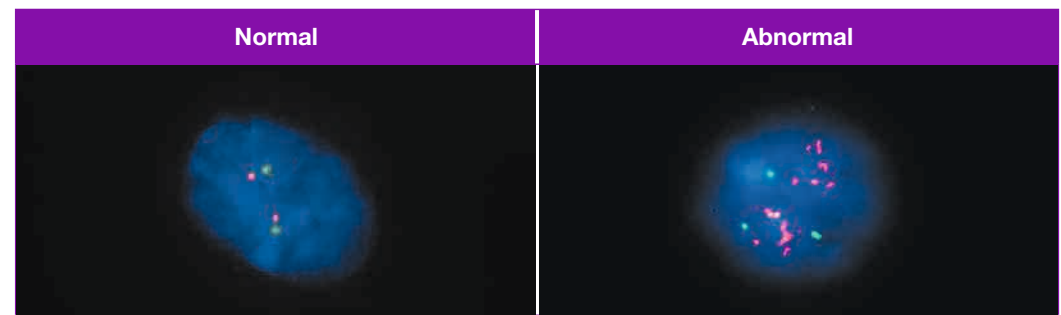
PathVysion for greater confidence in treatment decisions

Molecular science for proven accurate results

The PathVysion HER-2 DNA Probe Kit utilizes proprietary FISH technology to deliver **precision, accuracy, reproducibility, and objectivity** with:

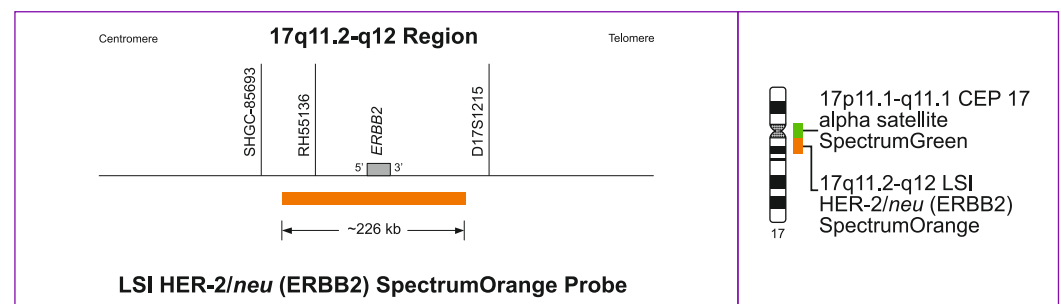
- Probes that detect stable DNA targets
- Control probe (centromere) to determine gene-to-chromosome ratio
- Proprietary direct fluorescence labeling technique
- Objective measure of HER-2/*neu* gene amplification

GUIDANCE
for treatment decisions



Probe Description (This set is premixed in Hybridization Buffer)

| Probe Name | Probe Location | Fluorophore |
|-----------------------------|-----------------------------------|----------------|
| Vysis LSI HER-2/ <i>neu</i> | 17q11.2-q12 | SpectrumOrange |
| Vysis CEP 17 | 17p11.1-q11.1 Alpha Satellite DNA | SpectrumGreen |



PathVysion HER-2 DNA Probe Kit II

The PathVysion HER-2 DNA Probe Kit II (PathVysion Kit II) is designed to detect amplification of the HER-2/*neu* gene via fluorescence in situ hybridization (FISH) in formalin-fixed, paraffin-embedded human breast and gastric cancer tissue specimens.

The PathVysion Kit II is indicated as an aid in the assessment of breast cancer patients for whom HERCEPTIN® (trastuzumab) treatment is being considered (see HERCEPTIN package insert).

Ordering Information

PathVysion HER-2 DNA Probe Kit II contains:

- LSI HER-2/*neu* SpectrumOrange/CEP 17 SpectrumGreen DNA Probe
- DAPI Counterstain
- 20X SSC
- NP-40

Probe Kit Storage: –20°C, protected from light

| Order No. | Kit Name | Breast Cancer | Gastric Cancer |
|---|--|---------------|----------------|
| LN 06N46-030 | PathVysion HER-2 DNA Probe Kit II (20 assays) | Yes | Yes |
| LN 06N46-035 | PathVysion HER-2 DNA Probe Kit II (50 assays) | Yes | Yes |
| LN 06N46-036 | PathVysion HER-2 DNA Probe Kit II (100 assays) | Yes | Yes |
| LN 02J02-032 | Vysis Paraffin Pretreatment Reagent Kit | Yes | – |
| LN 02J04-030 | ProbeChek HER-2/ <i>neu</i> Cutoff Control Slides | Yes | – |
| LN 02J05-030 | ProbeChek HER-2/ <i>neu</i> Normal Control Slides | Yes | – |
| <p>The new kit contains specific protocols for Gastric Cancer, including a manual protocol and also a semiautomated protocol using the VP2000 instrument. The following reagents are available for the Gastric Cancer protocols.</p> | | | |
| LN 06N46-001 | Protease IV (5 x 75 mg) (General-Purpose Reagent for Pretreatment), manual protocol | – | Yes |
| LN 06N46-002 | Protease IV (5 x 750 mg) (General-Purpose Reagent for Pretreatment), VP2000 protocol | – | Yes |

Innovative science from Abbott Molecular: Moving molecular diagnostics forward

For more information, visit www.abbottmolecular.com.